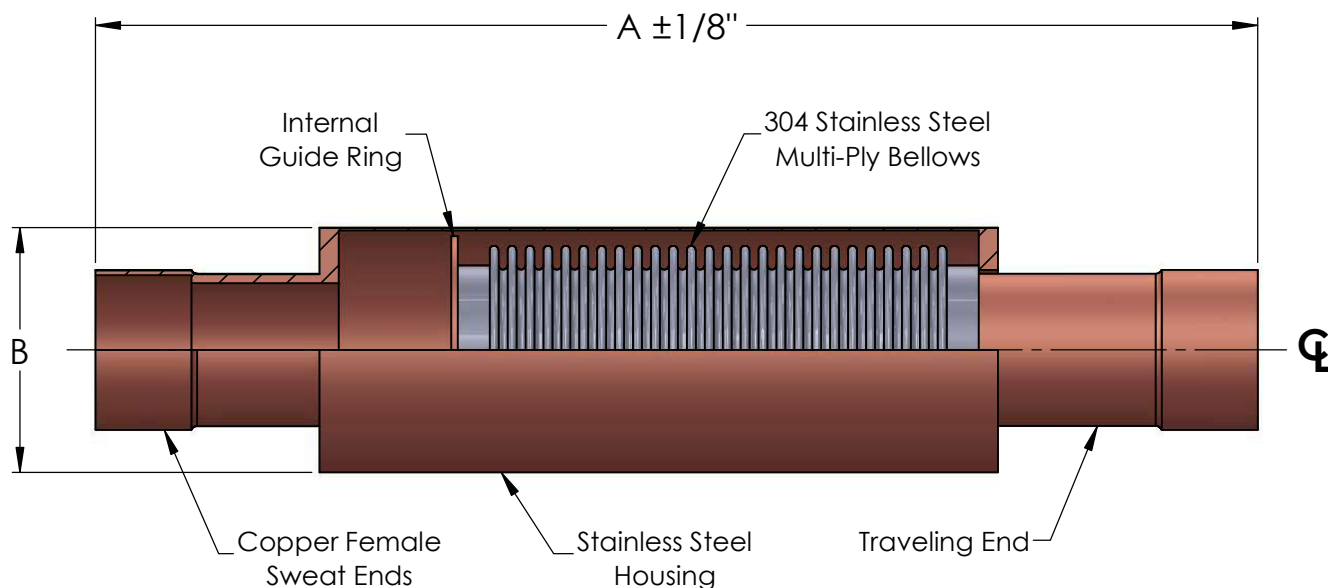
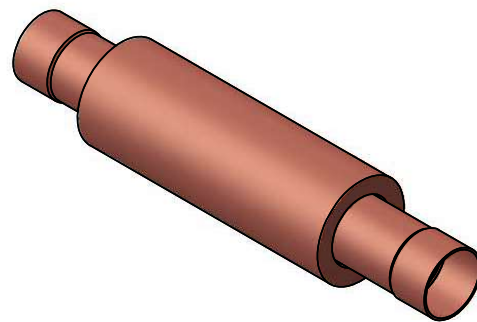


Copper Sweat Expansion Compensator Rated 2" Compression 1/2" Extension



QTY.	PART NUMBER	SIZE		A (IN)	B (IN)	EFFECTIVE AREA (IN ²)	SPRING RATE (lbs/in)	WEIGHT	NOTES
		(IN)	(MM)						
	120-075-2	3/4"	20	11	1-5/8	1.1	82	3/4	
	120-10-2	1"	25	11-1/4	2	1.7	89	1	
	120-12-2	1-1/4"	32	12-1/2	2-1/4	2.4	75	1-1/2	
	120-15-2	1-1/2"	38	12-7/8	2-1/2	3.2	74	2	
	120-20-2	2"	50	13	3	5.1	168	3	
	120-25-2	2-1/2"	65	13-1/4	4	7.6	188	4	
	120-30-2	3"	80	14	4-1/2	10.6	251	4-1/2	
	120-35-2	4"	100	15-1/16	5-7/8	17.9	341	9	

THE EXPANSION JOINT IS DESIGNED FOR AXIAL MOVEMENT ONLY. PIPE MUST BE PROPERLY GUIDED AND ANCHORED PER THE RECOMMENDATIONS OF THE EXPANSION JOINT MANUFACTURERS ASSOCIATION.

NOTES:

NSF 372 - LEAD FREE: The wetted surface of this product contacted by water contains less than one quarter of one percent (0.25%) of lead by weight. Material complies with state codes and standards where applicable, requiring reduced lead content.

Temperature	400°F (204°C)
Pressure	150 PSI (1034 kPa)
Test Pressure	225 PSI (1551 kPa)
Axial Compression	2" (50mm)
Axial Extension	1/2" (13mm)

REV.



Customer:

Project:

Style:

SCALE:
NONE

DRAWING NUMBER: